



5-25 47th Road, Long Island City, NY 11101

Residence
1A

INTERIOR 2,489 SQFT
EXTERIOR 1,644 SQFT
TOTAL 4,133 SQFT

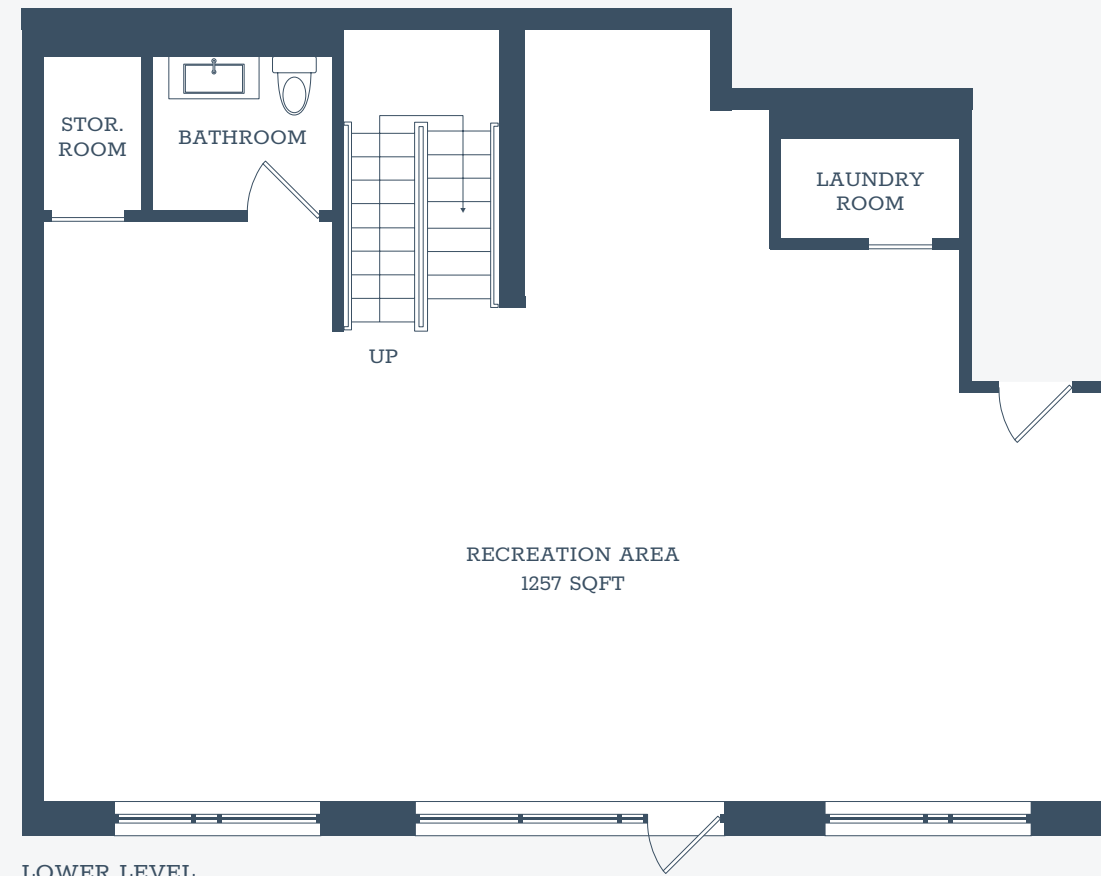
2 BEDROOMS
1.5 BATHROOMS

GREYSTONELIC.COM
561-961-8314

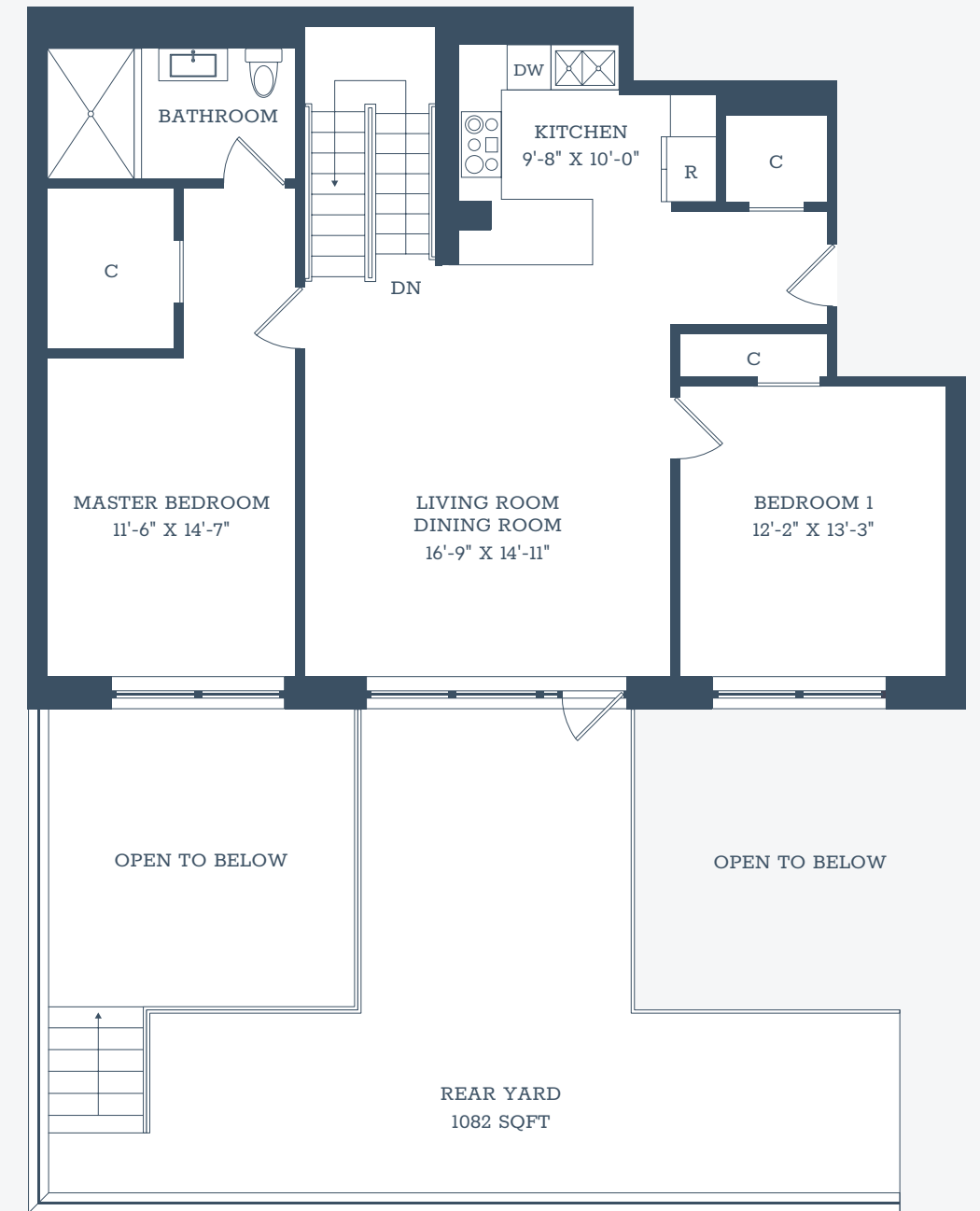


EQUAL HOUSING OPPORTUNITY. ALL DIMENSIONS AND SQUARE FOOTAGES ARE APPROXIMATE AND SUBJECT TO CONSTRUCTION VARIANCES AND MAY VARY FROM FLOOR TO FLOOR. SQUARE FOOTAGES EXCEED THE USABLE FLOOR AREA. THIS IS NOT AN OFFERING. THE COMPLETE OFFERING TERMS ARE IN AN OFFERING PLAN AVAILABLE FROM THE SPONSOR. SPONSOR RESERVES THE RIGHT TO MAKE CHANGES IN ACCORDANCE WITH THE OFFERING PLAN.

THE COMPLETE TERMS OF THE OFFERING ARE AVAILABLE WITH THE NEW YORK STATE DEPARTMENT OF LAW UNDER FILE NO. CD180126



LOWER LEVEL



FLOOR 1 (GROUND FLOOR)

